

**POWER EN**  
EXTRA POWER  
TO YOUR  
ENGINEERING

**POWER ENGINEERING  
A HIGH KNOWLEDGE-INTENSIVE  
COMPANY AT YOUR SERVICE**



# POWER ENGINEERING IS A COMPANY WITH A HIGH KNOWLEDGE CONTENT PUT AT YOUR BUSINESS SERVICE



**POWER ENGINEERING SRL** is specialized in the design of industrial machinery and systems in outsourcing and insourcing and in the management of complex energy systems.

**20 TECHNICAL EXPERTS** having different skills but the same goal compose our team and our purpose is to find the ideal solution for every specific demand our client may have. People are our strength: we cultivate young talents and enhance figures with many years of experience who have been working with us since 2004. We are constantly improving our abilities; we invest in **TRAINING AND IN RESEARCH & DEVELOPMENT** willing to be one-step ahead in technological field.

We face every challenge with open mind, strongly believing that **OPEN INNOVATION** is a chance to improve and get stronger: blending different ideas can produce competitive advantage to your business, too. We operate on the principle of **CIRCULAR ECONOMY** in which we trust; as a matter of fact we are committed to invest in a production and consumption model that ensures a **SUSTAINABLE GROWTH** by regenerating resources **IN ORDER TO REDUCE ENVIRONMENTAL IMPACT.**

In this sense, the role each one of us assume in **POWEREN®** has a high social responsibility: let's start designing a better future together!



## MISSION

**DESIGNING INDUSTRIAL MACHINERY AND SYSTEMS PUTTING OUR HEARTS AND MINDS, ALWAYS FOCUSING ON INNOVATION AS WE BELIEVE THAT EVERY NEW IDEA CAN BE A STARTING POINT TO CREATE A BETTER WORLD, A MORE TECHNOLOGICAL - AND AT THE SAME TIME MORE SUSTAINABLE - WORLD.**

## VISION

**WE WANT TO COME UP WITH A NEW WAY OF DESIGN: OUR CENTRAL PILLARS ARE OPEN INNOVATION AND CIRCULAR ECONOMY, OUR PURPOSE IS BEING AT THE FOREFRONT OF TECHNOLOGY AND SOCIAL SUSTAINABILITY.**

POWEREN®

SOCI  
FONDATORI

PARTNER  
STRATEGICI





**POWER EN**

SISTEMA  
POWEREN

## POWEREN SYSTEM

RESEARCH & DEVELOPMENT  
OPEN (GREEN) INNOVATION  
CIRCULAR ECONOMY  
POWEREN'S LAMAPIM®



**POWER EN**

PROGETTAZIONE  
INDUSTRIALE

## INDUSTRIAL DESIGN

PLANT DESIGN  
DESIGN OF INDUSTRIAL MACHINERY  
TECHNICAL DOCUMENTATION  
FEM STRUCTURAL ANALISYS  
ONSITE SURVEYS AND 3D SCANNING  
PROTOTYPE DESIGN



**POWER EN**

CONSULENZA  
INGEGNERISTICA

## CONSULTANCY

ENGINEERING CONSULTANCY  
ASSESSMENT RISK CONSULTING  
TECHNICAL DEPARTMENT POWER UP  
CONSULTING  
TECHNICAL DEPARTMENT  
REORGANIZATION CONSULTANCY



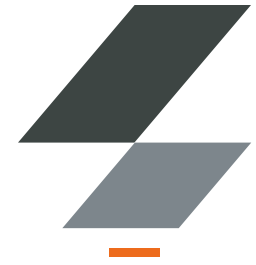
**POWER EN**

POTENZIAMENTO  
ORGANICO TECNICO

## TECHNICAL STAFF POWERING UP

TECHNICAL DEPARTMENT POWER UP  
CONSULTING  
RECRUITING OF TEMPORARY  
SPECIALIZED STAFF  
RECRUITING AND TRAINING  
OF SPECIALIZED STAFF

PARTNER  
STRATEGICI



# RESEARCH & DEVELOPMENT

International market dynamics always ask companies to face **NEW CHALLENGES**. **CHANGES ARE FASTER AND FASTER** and we have to be able to answer promptly and effectively both to stakeholder's needs and to competitors. **ONGOING EVOLUTION** has to be considered **AS AN OPPORTUNITY**: solving a problem becomes part of our wealth of knowledge. Nowadays **INVESTING IN RESEARCH & DEVELOPMENT** is much more than decisive: **IT IS IMPERATIVE**.

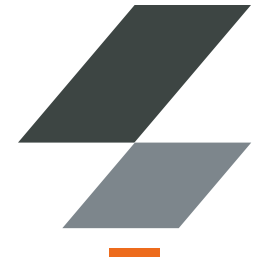
Providing a **RESEARCH & DEVELOPMENT DEPARTMENT IS STRATEGICAL** for any business organization. This office deals with the very **DIFFICULT ROLE OF BUILDING THE COMPETITIVE ADVANTAGE**. It deals with two of the primary activities within a company: analyzing new products and technologies, firstly; developing and then switching a hypothesis of research into a real item or service, secondly. Poweren is a supplier of cutting-edge design service as well as the ideal partner to **INVEST IN RESEARCH & DEVELOPMENT**, who uses to work in synergy with the customer technical staff.



## WHAT DO WE OFFER MORE?

- We have always had a **STRONG ATTITUDE FOR RESEARCH AND INNOVATION**. Every year we plan internal research projects in order to concretize ideas.
- **WE DEVELOPED A START-UP** that look at the future with deeds, not words.
- **WE REGISTERED SEVERAL TRADEMARKS**, we registered **OUR PATENT** for an industrial invention and we supported some customers while certifying their own patent.





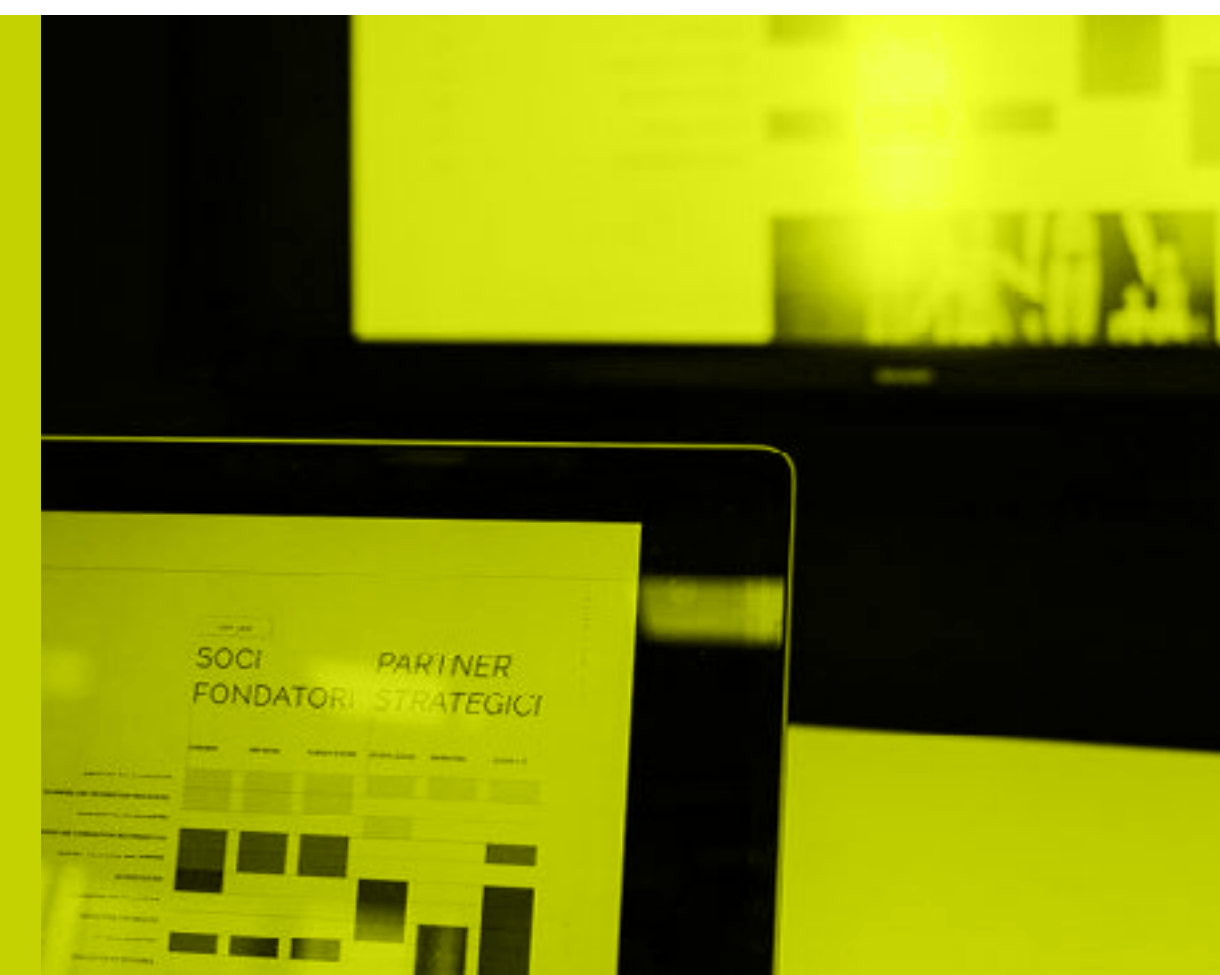
# OPEN (GREEN) INNOVATION

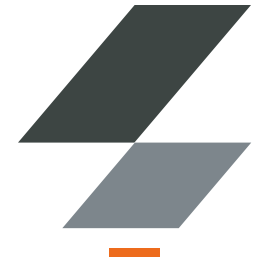
Traditional innovation models (“Closed Innovation”) are not able to meet needs of a constantly **EVOLVING MARKET**, anymore: the stream of know-how between suppliers and reputable external consultants is being currently more and more required. This approach is going to **BECOME A REAL CHANCE TO GROW FOR EVERY COMPANY**. Mixing new ideas is the **SUCCESSFUL STRATEGY** to develop expertise and provide to customer brilliant cutting-edge projects. We are always on the move to offer you innovative solutions and to be an **ADDED VALUE TO YOUR BUSINESS**.

Opening your mind to fresh ideas, new solutions and technologies coming from outside your company is **A WISE AND SUCCESSFUL CHOICE** if you aim to improve. This kind of approach will allow you to **BE MORE COMPETITIVE**. **OPEN INNOVATION IS THE PERFECT TOOL TO A COMPANY LOOKING FOR NEW OPPORTUNITIES** to widen resources to draw from.

## WHAT DO WE OFFER MORE?

- We keep constantly dialoguing with experienced professionals who work in different sectors: **THIS KIND OF NETWORKING** grant us to drawn on a wealth of interdisciplinary knowledge.
  - We don't want only to invest in **OPEN INNOVATION**, we are more ambitious: we want to be forerunners of the **OPEN GREEN INNOVATION** model.
- To us, realizing sustainable projects is a priority and for this reason, we provide our professionalism to cooperate to set a development plan while **RESPECTING THE ENVIRONMENT**.
- We detected figures among our staff with **NATURAL INCLINATION TO OPEN-MINDEDNESS** and able to face challenges by getting involved and by coming down with fresh paths.





# CIRCULAR ECONOMY

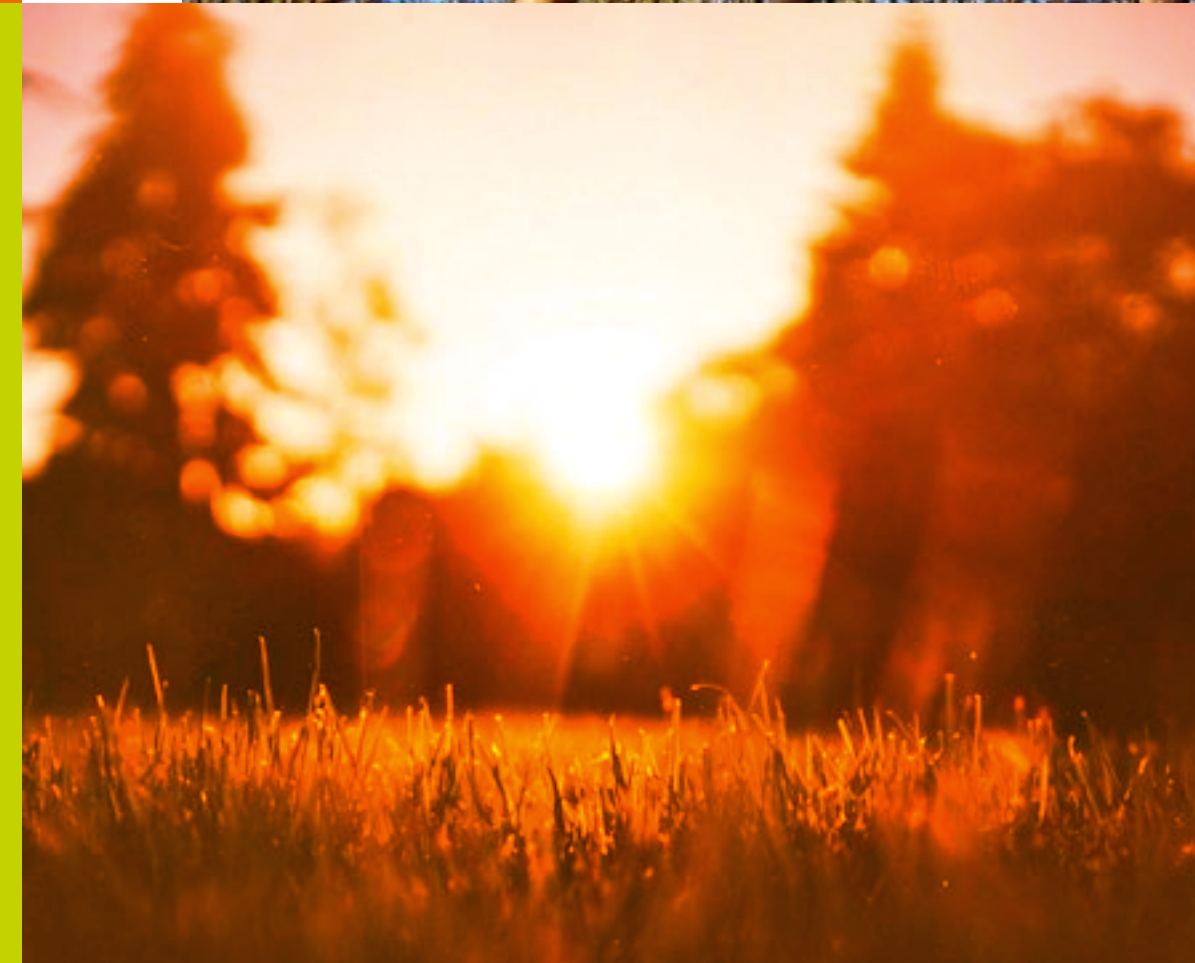
As a business company, we do have a role and **SOCIAL RESPONSIBILITY** to keep clear in mind. The linear economic model based on take-make-waste system isn't sustainable anymore both on environmental perspective and affects in industrial economic equilibria of companies operating in a more and more complex market.

Investing in circular economy is a growth chance and enable you to experience with new technological, designing and creative opportunities. **EVERY SINGLE CHOICE YOU MAKE IS CRUCIAL:** the designed materials have to be renewed or renewable, manufactured by using materials “re-entered” in the productive cycle, like glass, steel and metals in general.

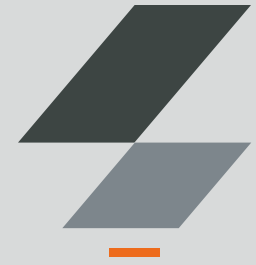


## WHAT DO WE OFFER MORE?

- Poweren is striving to adopt some industrial procedures which are the basis of **CIRCULAR SUPPLY CHAIN**, such as reusing and recycling materials, studying how to extend the lifecycle of products, machinery, plants and developing a sharing platform.
- Choosing Poweren means making a **RESPONSIBLE CHOICE**. It is not only a matter of quality, prices and expertise: behind each single product we realize lies the determination to shape an eco-sustainable system.







# POWEREN'S LAMAPIM®

EXPERTISE / PROFESSIONALITY / KNOW-HOW.

LAMAPIM® method comes out from all this skills, managing each single phase optimally, from preliminary drafts to executive drawings. Data will be shared through all passages that will lead to the realization of plants, their startup and maintenance, facilitating the work to the professional figures involved.

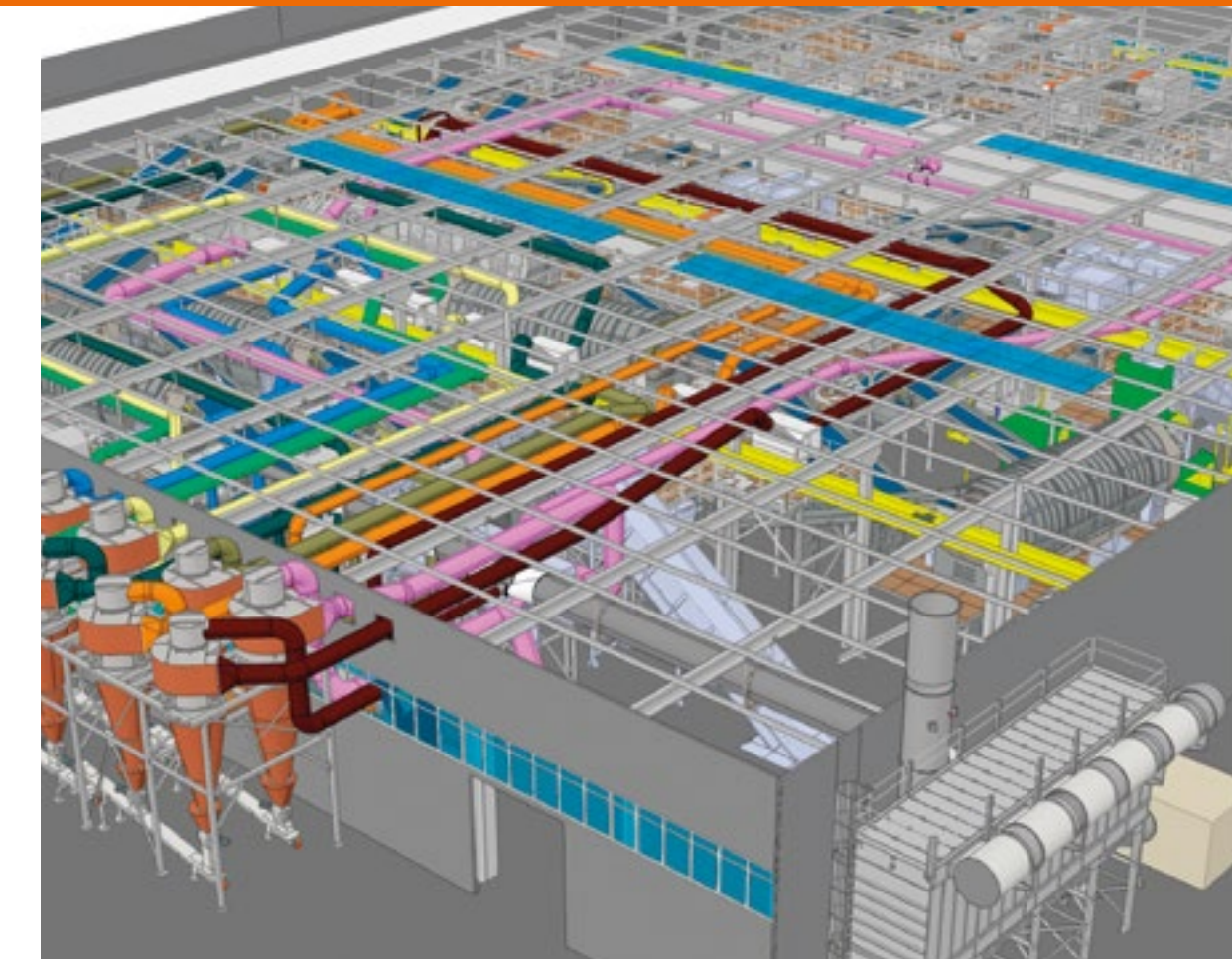


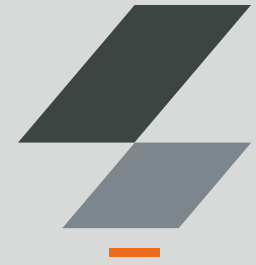
## WHAT DOES LAMAPIM® OFFER?

- It minimizes risks in machinery production defects thanks to design faults erasing up to 95%.
- It anticipates all phases: it provides the possibility to print the bill of material in real time since the approval of the preliminary drawing, enabling to start production and supply of semi-finished products.
- It anticipates start-up production times and

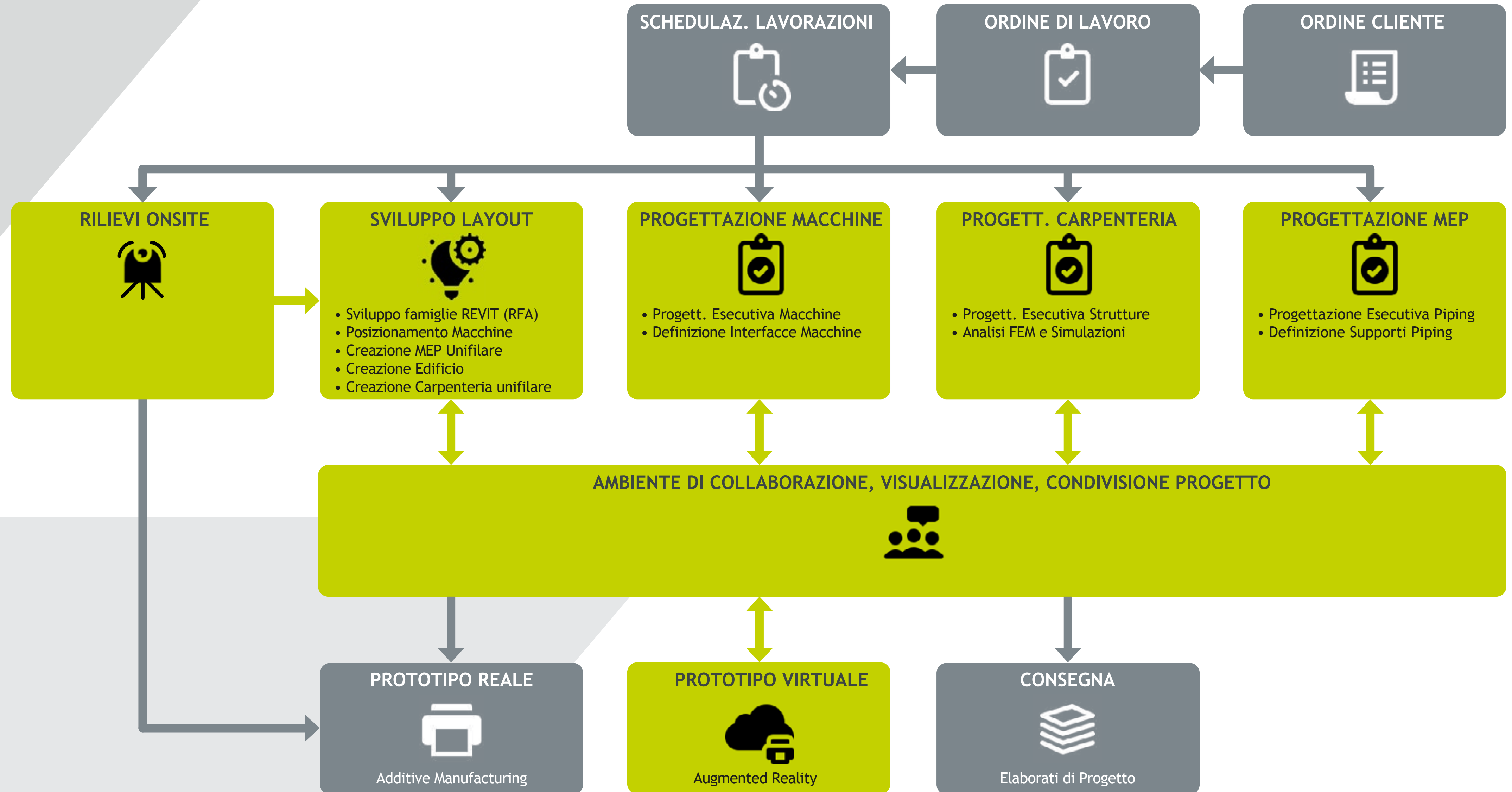
- supplying of semi-finished products up to 80%.
- It clears “on site” concerns thanks to augmented reality to simulate fitting of plants and machinery.
- It keeps track of digital information of plant and machinery all their life long.
- It uses the latest technologies and works in Cloud to speed up the processes and share the information with the entire team.

LAMAPIM® uses innovative and updated software permitting to share information. This solution lead to an important reduction of revisions and subsequent errors, up to 95%.





# POWEREN'S LAMAPIM®





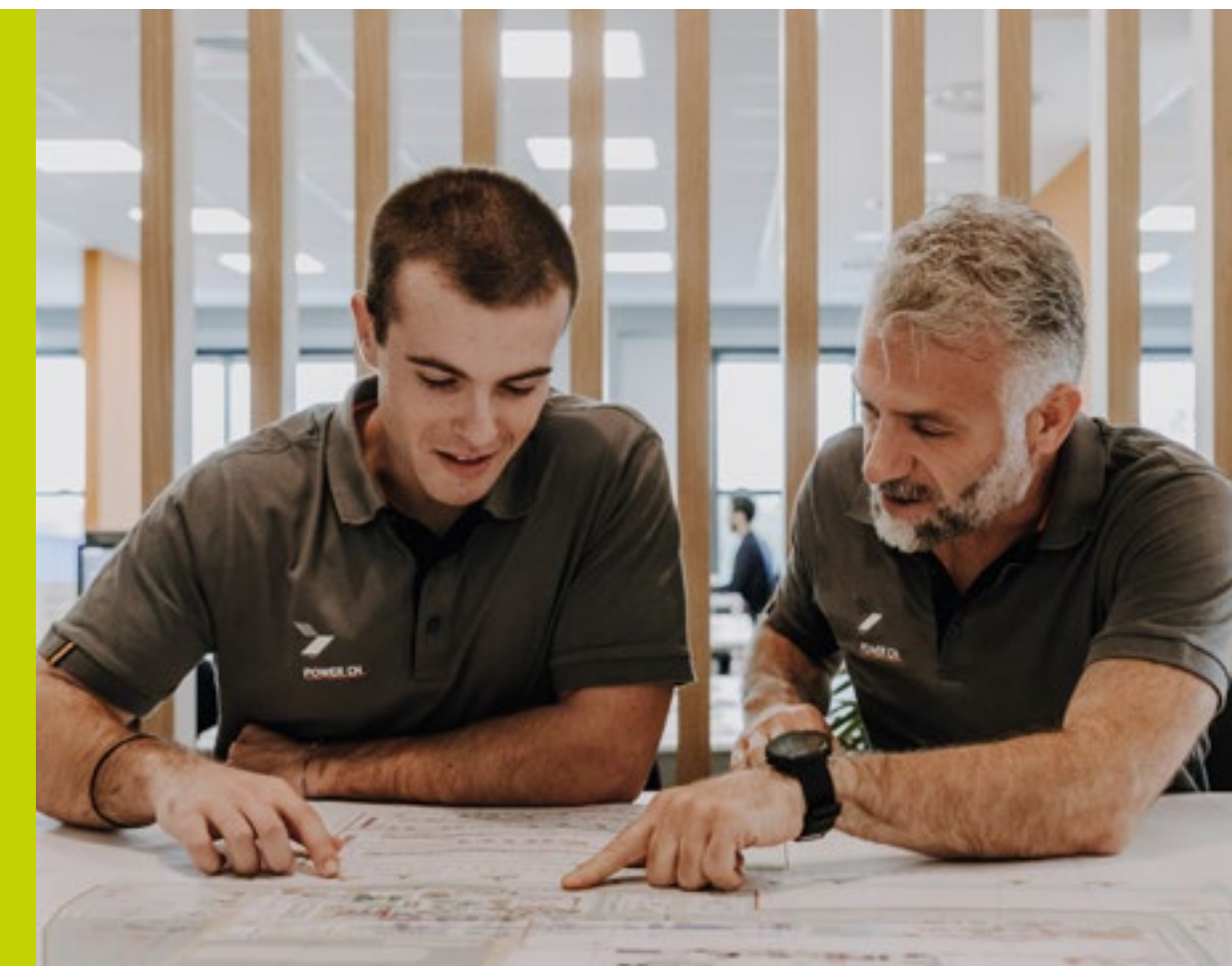
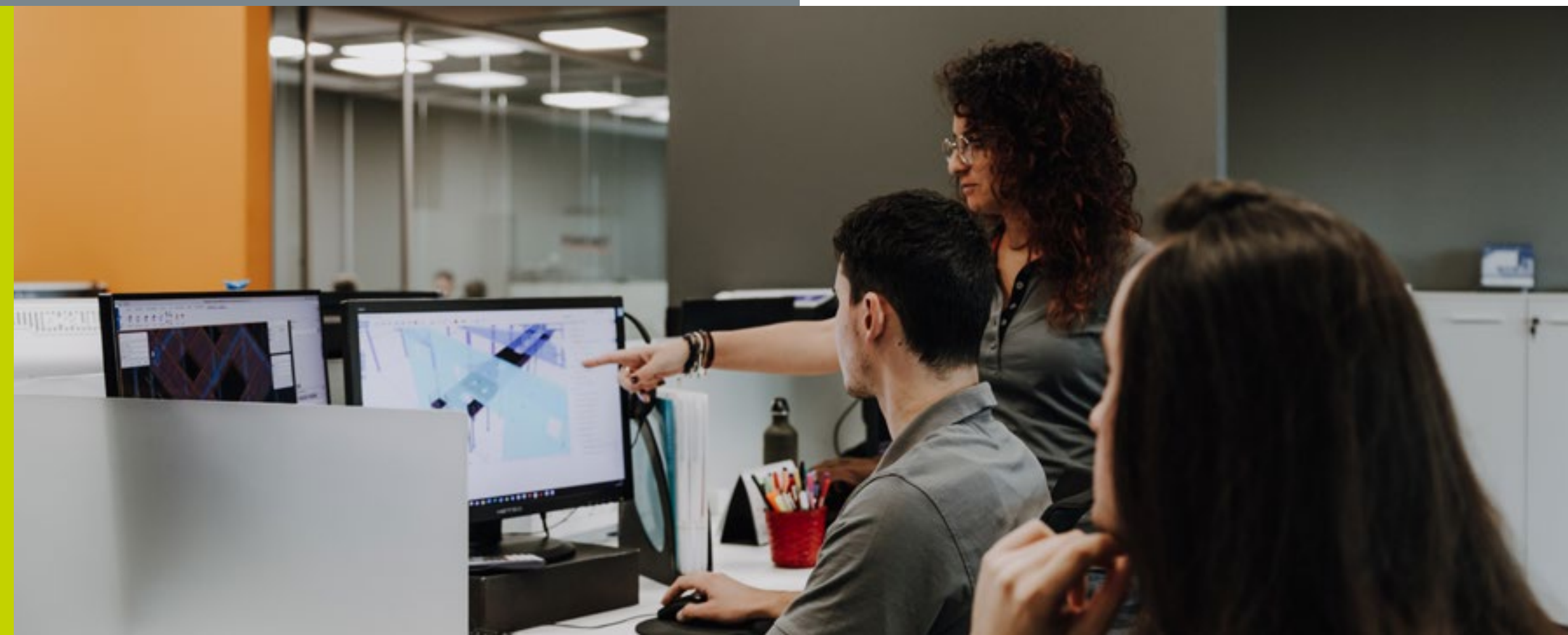
# PLANT DESIGN

Plant design is the core of our business. POWEREN delivers to customers a full palette of services: from management of operational matters, **TO SIMULATION OF THE WHOLE MACHINERY LIFE CYCLE** (planning, building, maintenance etc.) thanks to the creation of a smart 3D template. This kind of modus operandi ensures to monitor each step maintaining awareness of the desired final outcome and the chance to consider alternatives ways.

Because leaning on a design company to get a new plant projected means **TO BENEFIT FROM EXPERIENCE AND EXPERTISE**. Because investing in technology means increasing production **OPTIMISING REVENUES AND COSTS**. Because planning cannot be enough, coordinating inner and external departments is fundamental to achieve outcome: choose who offers the same expertise, **SAVE TIME AND GIVE YOU COMPETITIVE ADVANTAGE**.

## WHAT DO WE OFFER MORE?

- Our work is based on a **PROVEN STRATEGY**, which allow us to improve performance of plants and industrial machinery granting supervision on the project all its cycle life long.
- We minimize the possible presence of errors. **WE INCREASE THE QUALITY OF MEP PROJECTS** (mechanical, electrical and hydraulics) and follow our customer from the planning to the delivery of the work interacting with all professional figures.
- We are a **SPECIALIZED TEAM** and we know exactly how to fulfil all customer's needs.
- Operative management mustn't be a leap in the dark: we supply **ALL THE INFORMATION** you need to have your plant working.
- Response agility, **SHORT DELIVERY TERMS**. We understand that each delay is a loss for our customer and that is the reason why timelines is one of our strengths.





# DESIGN OF INDUSTRIAL MACHINERY

Design of industrial machinery is the core business of our company: we aim to **OPTIMIZE TECHNIQUE AND METHOD OF PRODUCTION** of each item, enhancing our level of quality in terms of efficacy, safety, costs and profits while in the meantime reducing the environmental impact.

**INVESTING IN TECHNOLOGY IS THE RIGHT STRATEGY** to compete in a more and more demanding market but only if you rely on who can grant you the expertise to design cutting-edge industrial machinery, functional and performing.

## WHAT DO WE OFFER MORE?

- We can boast a strong experience background in Machinery Directive that allow us to identify the existing risks and taking appropriate measure to prevent and minimize them since the designing phase.
- We minimize the possible presence of errors. **WE INCREASE THE QUALITY OF MEP PROJECTS** (mechanical, electrical and hydraulics) and follow our customer from the planning to the delivery of the work interacting with all professional figures.
- We are a **SPECIALIZED TEAM** and we know exactly how to fulfil all customer's needs.
- Our engineers are able **TO HYPOTHESIZE HOW MACHINERY WORKS** even in presence of extreme events (such as **SEISMIC ACTIVITY**).
- We have always had a **STRONG ATTITUDE FOR RESEARCH AND INNOVATION** and we provide it to our customers supplying an innovative design service.





# TECHNICAL DOCUMENTATION

Every standard product, special machinery or plant must be accompanied by its **TECHNICAL DOCUMENTATION**. This documentation has **TO BE DRAFTED IN ORDER TO EXPLAIN** to the final customer the usage, correct handling, transport, installation and maintenance in a clear and precise manner. It ensures to **OPERATE SAFELY** and preserve functionality and durability of products.

POWEREN is charged in drafting the technical documentation for any project developed within our studio, and more: we have the required **KNOW-HOW TO DRAFT OPERATOR'S MANUALS AND TECHNICAL FILES** for products and equipment which have been previously realized by our customer.

Thanks to **USE AND MAINTENANCE MANUAL**, customer can learn more about safety and intervention procedures, can examine the different phases (design philosophy, transport, installation, assembly, usage, maintenance and dismantling after using) which have to be jointly developed with company managers.

## WHAT DO WE OFFER MORE?

- **OUR STAFF HAS THE EXPERTISE** to develop everything that can be necessary to make highly technical products clear to everyone by using explanatory texts and images.
- We also had the chance to gain experience in **MACHINERY DIRECTIVE** achieving excellent results: we could re-arrange technical manuals of complex machinery in order to make every revision easier and grant our customer the possibility to **MANAGE IT AUTONOMOUSLY**.
- In our professional path, mostly in thermal engineering sector, we strengthened previous cooperation **WITH GRAPHIC DESIGNERS AND TRANSLATORS** reason why we can provide a complete service package to our customer.
- We gained experience in Machinery Directive and we can consequently **SUPPORT OUR CUSTOMER ON ISSUE OF SAFETY ALREADY IN THE DESIGNING PHASE**: we focus on identifying existing risks to have an evaluation plan indicating appropriate measure to prevent and minimize them already in the designing stage.
- It sometimes happens that in the designing phase, people wonder why investing on resources and time for the technical documentation should be necessary: well, **BY THE END OF THE WORK, MORE THAN A CUSTOMER RECOGNIZED THAT VALUE WE GAVE TO SAFETY WAS WELL WORTH**. That's the reason why we are very proud to keep on going this direction.





# FEM STRUCTURAL ANALISYS

To solve **COMPLEX PROBLEMS OF ELASTIC AND STRUCTURAL ANALYSIS** you have to lean on who has skills and expertise. This calculation method allows you to test in **A SCIENTIFIC WAY STRESSING** under which your product will operate and will be subjected to. **SAFETY MUST BE A PRIORITY**, it is not desirable to experiment any unproven approach.

**FEM STRUCTURAL ANALYSIS (FINISHED ELEMENTS METHOD)** allows us to test how a system acts while being subjected to external condition of stress such as constraints and loads.

**PRE-ANALYSIS PROCESS:** thanks to the knowledge of our Engineers, we are able to switch a real physical situation into a mathematics model.

**THE ANALYSIS PROCESS:** it consists in effectively solving the problem.

**POST-ANALYSIS PHASE:** we elaborate and provide the solution.

## WHAT DO WE OFFER MORE?

- **OUR STAFF HAS THE EXPERTISE** to assess situation and to solve a wide variety of engineering problems (relating to solid mechanics, fluid mechanics, heat mechanics etc.)
- Our engineers are at your disposal to empower your designing office to study complex physical aspects, while scanning your system process or product performance even in presence of extreme events (such as seismic activity).
- Our way of operating grant us to **DETECT CRITICAL POINTS OR WEAKNESS,**

**BAD OR GOOD MASS DISTRIBUTION,** critical stress or strain state, potential break point and more importantly allows us **TO IMPROVE THE USE OF MATERIALS.**

- Our primary purpose is **TO PRESERVE PEOPLE'S SAFETY** as well as products.
- Our secondary goal is to help you **FIND LESS IMPACTING SOLUTION FOR WHAT CONCERNS THE USE AND CONSUMPTION OF MATERIALS USED** (in accordance with the respect of the circular economy policy we believe in).





# ONSITE SURVEYS AND 3D SCANNING

**WHY?** Because the secret to realize a good project lies in knowing the starting point and be holding all the required information to get started.

**BEFORE YOU START RUNNING, YOU NEED TO IDENTIFY GOAL, CRITICAL ISSUES AND STRENGTHS. ONLY IF YOU HAVE THE RIGHT PREPARATION, YOU WILL GET GREAT OUTCOMES.**

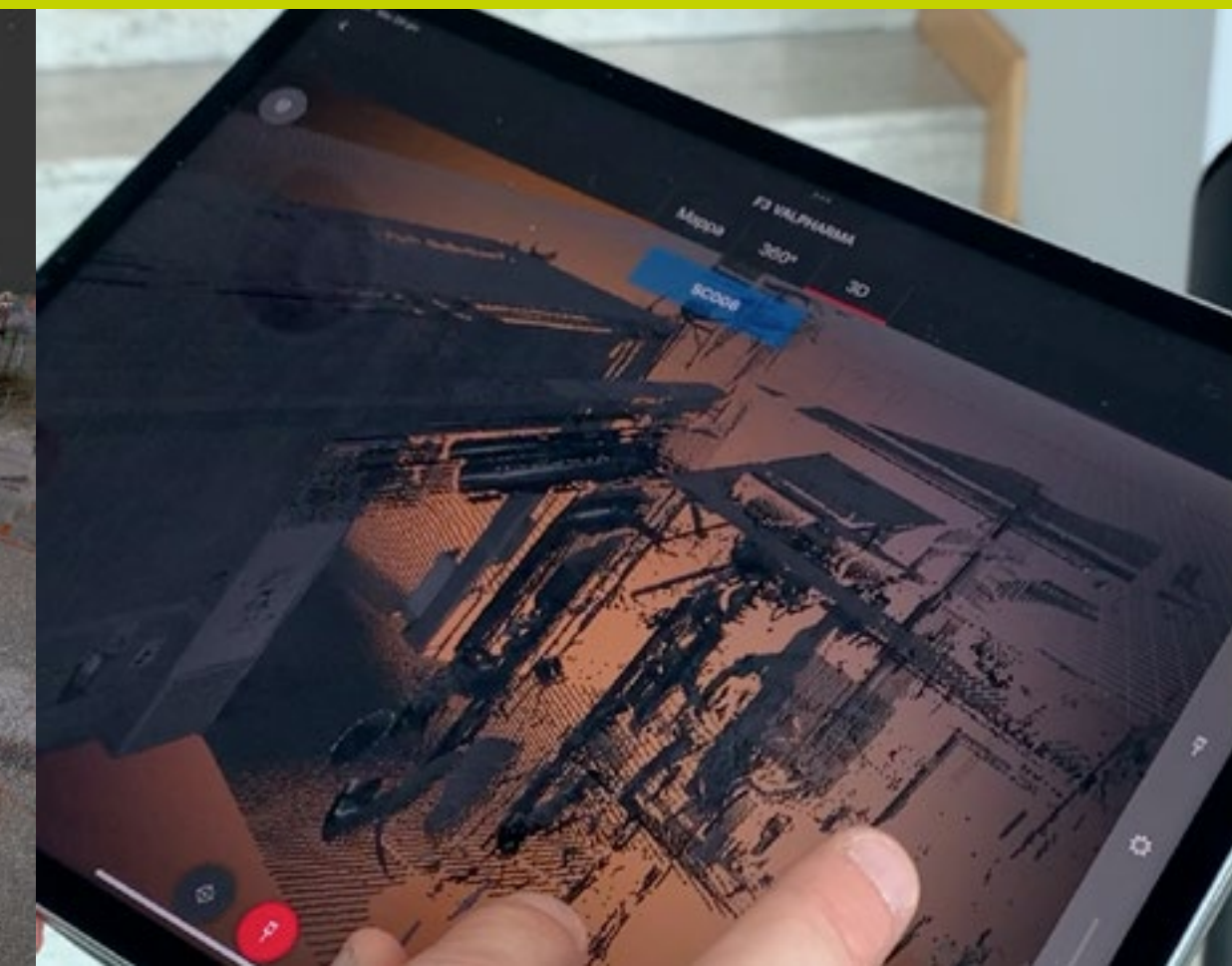
**WHAT ARE SURVEYS ONSITE AND 3D SCANNING?** They are cutting-edge technologies allowing you to have a picture of industrial plants status quo. We have decided to invest on a tool that grant us to improve the quality of our service: thanks to the 3D scanner with integrated spherical imaging and thermographic sensor with panorama function, we are able to realize high precision surveys. This tool permits us to create a database of three-dimensional points that can be interactively consulted and integrated. Scanner enables you to capture the cloud of points, spherical and thermographic image within less than 3 minutes ensuring an increase in the amount of information. The overall time of onsite surveys depends on the size of the room and on the quantity of objects present in it, anyway this process allows you to have all the information you need to start designing, speeding up times.

The spherical image of the photo is viewed and studied by technical experts who process the survey data. It is subsequently possible to export the final scanning into a wide variety of universal format, as RCP, LGS, E57 and send them into the cloud for a global collaboration in real time. **HAVING THE RIGHT EQUIPMENT IS CRUCIAL FOR EVERY COMPETITION.**

## WHAT DO WE OFFER MORE?

- Professionality, precision, quality. We strive every day to test new technologies and provide them to our customers.
- We always look for new innovative solutions because we consider tech-advancement a strategy to succeed.

**TOMORROW MATCH IS ALREADY PLAYING TODAY.**





# PROTOTYPE DESIGN

To compete YOU NEED TO BE INNOVATIVE. In a constantly evolving market, you cannot sit watching, you need TO BE FORWARD-LOOKING AND BRAVE enough to bet on ambitious projects that can turn out to be pioneering. Prototyping means IMPLEMENTING A WORK. By prototyping, FUNCTIONALITIES OF SUGGESTED SOLUTIONS CAN BE TESTED, enhanced and improved. Going from THEORY TO PRACTICE represents an essential testing ground for designers.

Designing a prototype means realizing a new model: our target is **FINDING NEW SOLUTIONS THROUGH CROSS-CONTAMINATION DUE TO DIFFERENT SKILLS AND TECHNOLOGIES EMPLOYED**, contemplating ideas arising from various business sectors as suggested by the Open Innovation model we draw inspiration from.

Prototype Design is a challenge: you can rarely refer to an already existing similar case, **YOU NEED TO FIGURE OUT A POSSIBLE STRATEGY** and envision the results, thinking out of boxes.

Comparing to different reality ensures you to have a **WIDER VISION** and to assess the most various prospects.

## WHAT DO WE OFFER MORE?

- Innovating is in our DNA: we are ready to get involved enthusiastically. It is a growth opportunity, it's challenging and fun, **THIS IS THE AMAZING PART OF OUR JOB.**
- Being pro-active **IS WHAT MAKES US DIFFERENT.**
- We provide our **EXPERTISE TO WHOEVER WOULD LIKE TO INVEST** and bet on innovative prototype projects.

We take the challenge bravely and passionately.

- Developing technological and productive opportunities **IS PART OF SOCIAL RESPONSIBILITIES OF AN ENGINEERING STUDIO** who has the willing and the abilities to create its own future, like ours do.

**A FUTURE MORE AND MORE SPEAKING THE LANGUAGE OF CIRCULAR ECONOMY.**







# ENGINEERING CONSULTANCY

**ENERGY CHOICE** is not an option: nowadays it is a responsibility. Each company must be conscious that **NOT ALL RESOURCES ARE RENEWABLE** and must set a strategy to avoid energy waste. It is a **MORAL DUTY** trying to reuse offcuts.

Poweren provides to its customers an advisory energy consulting service in order to evaluate advantages and disadvantages in case of **TECHNOLOGICAL INNOVATION INTERVENTIONS** on plants in terms of energy recovery and cost saving. Our designers, which claim **MANY YEARS OF EXPERTISE**, are able to develop recovery plans of waste energy sources and are specialized in **DESIGNING COMBINED HEAT AND POWER SYSTEMS**. Our modus operandi includes a preliminary benefit-cost analysis of the existing situation, after that we evaluate the potential strategies (either already suggested by customer or submitted by our engineers) always keeping benefits and costs in mind.



## WHAT DO WE OFFER MORE?

- Our team can boast of **ENERGY ENGINEERS** with many years of experience who also had the chance to work in **DESIGNING COGENERATION SYSTEMS**.
- **WE TRUST IN THE CIRCULAR ECONOMY** principles and we strive to follow the best practice in our company by suggesting **SUSTAINABLE PROGRAMMES** to our customers, too.
- We chose to **SPECIALIZE IN ENERGY CONSULTING** because we decided to make the best of our knowledge in industrial processes and plants - not for any political reasons or to take advantages of tax breaks.

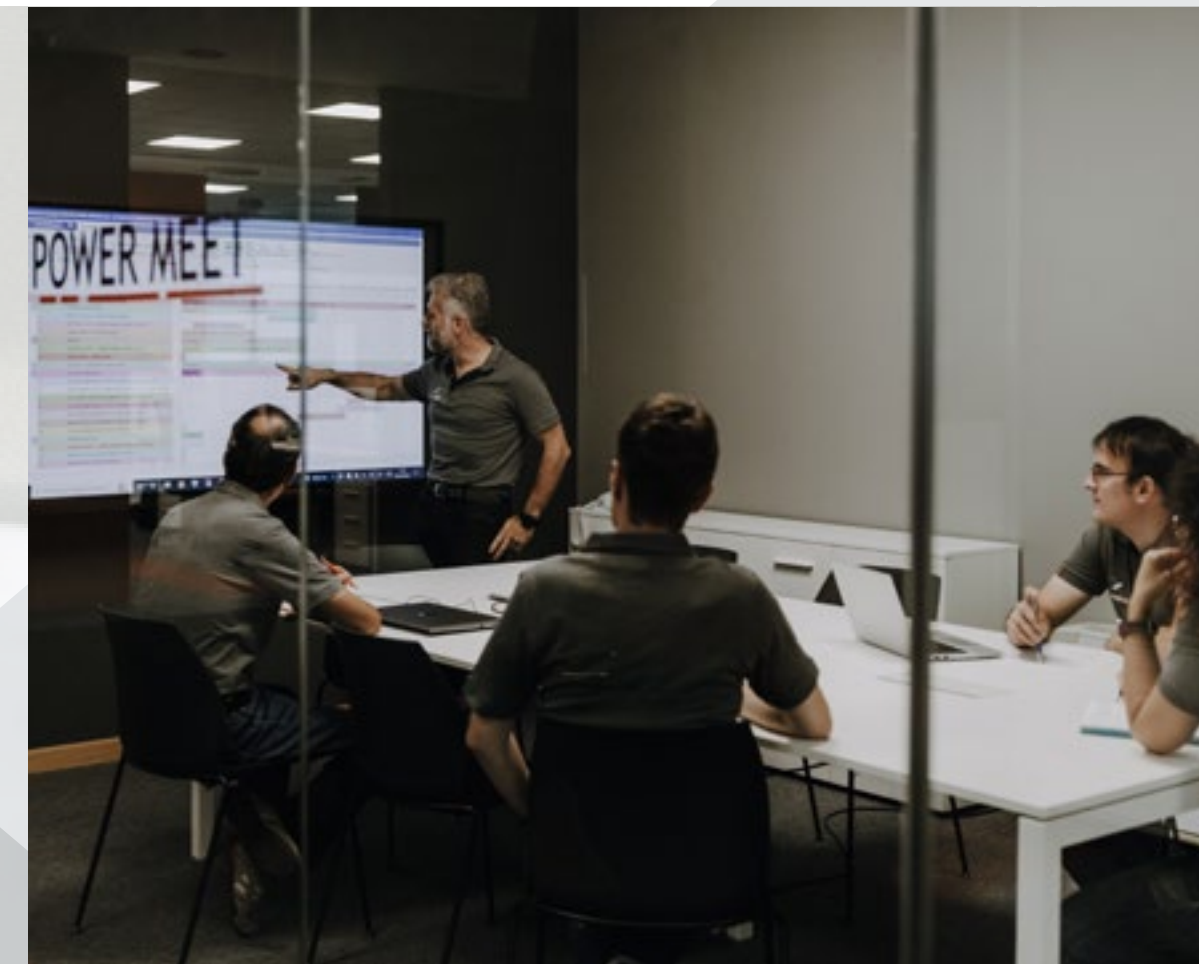




# ASSESSMENT RISK CONSULTING

**SAFETY AT WORK** is the basis of every single project we develop. Our goal is realizing **PERFORMANT MACHINERY BUT MORE IMPORTANTLY RELIABLE** machinery. It is not enough for a machinery to work; it has **TO WORK SAFELY** to meet the requirements in compliance with applicable regulations.

Poweren provides to its customers a **RISK ASSESSMENT CONSULTING** service included in the design phase. It is a technical analysis needed to identify any risks that may occur in the different phases of industrial machinery and plants lifecycle (assembly, use, maintenance, removal and dismantling) and that is necessary to take appropriate measure to prevent or reduce them.



## WHAT DO WE OFFER MORE?

- As per our policy we do draw up the assessment while developing each single project aiming **TO MINIMIZE THE RESIDUAL RISK** and to have full control of the process.
- Realizing technical, clear, simple but at the same time well detailed documentation is one of **OUR PRIORITIES** in order to provide to our customer an user-friendly tool for its activity.





# TECHNICAL DEPARTMENT REORGANIZATION CONSULTANCY

TO GROW, it is necessary to get in the game firsthand, to face challenges and shuffling the cards on table. To change some procedures, redefine responsibilities and staff roles can reveal as a **STRATEGIC INVESTMENT**. Going your own way without taking any stop, it sometimes is counterproductive: having a pause, **REFLECT** and then starting over again is worth awhile..

Poweren provides to its customers a service aiming to improve their technical department in order to give them the chance to revitalize their production starting from human resources. After having an in-depth interview with the head of technical office to have a complete panorama of the dynamics among members of the staff, we **ANALYZE THE STATUS QUO** and follow then a specific procedure. Subsequently we complete a **MAPPING OF THE PERSONNEL** following the guidelines of a skill matrix realized by our own company that allows us to assess the strengths and weaknesses. We will then define a plan that includes a **NEW ORGANIZATIONAL CHART**, a learning path and, if necessary, a future powering up of the staff.

## WHAT DO WE OFFER MORE?

- Corporate reorganization is something that we do first for ourselves, by keeping constantly updated to **GROW TECHNICALLY AND METHODOLOGICALLY**.

- **OUR SKILL MATRIX** provides an innovative and winning reading key to understand staff: many cases history witness.

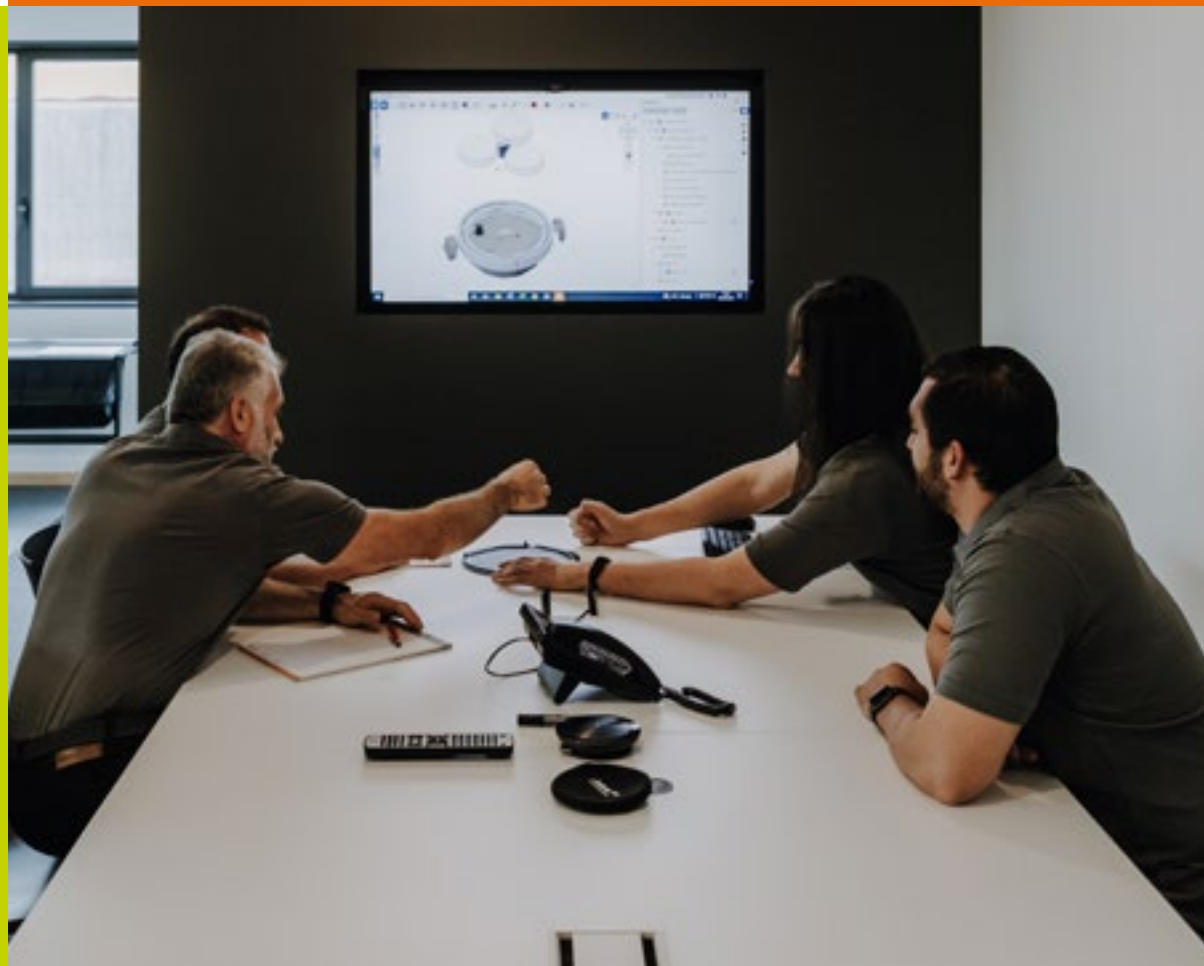




# TECHNICAL DEPARTMENT POWER UP CONSULTING

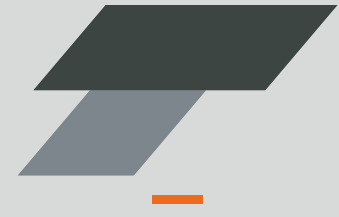
Selecting personnel with the **RIGHT EXPERTISE** and proper knowledge is not so easy. You may need **TO IMPLEMENT YOUR STAFF** (because of production trend, lack of staff, merger of companies etc.) and you don't have an internal human resources department to manage recruiting. We have the necessary experience to guide you during the employment restructuring and to cooperate while planning your **JOB GROWTH** to go together with the industrial growth.

Poweren provides to its customers a service aiming to power up technical department in order to guide them in recruiting, providing the necessary tools to select **PROFESSIONALS HAVING THE RIGHT SKILLS** for the open position.



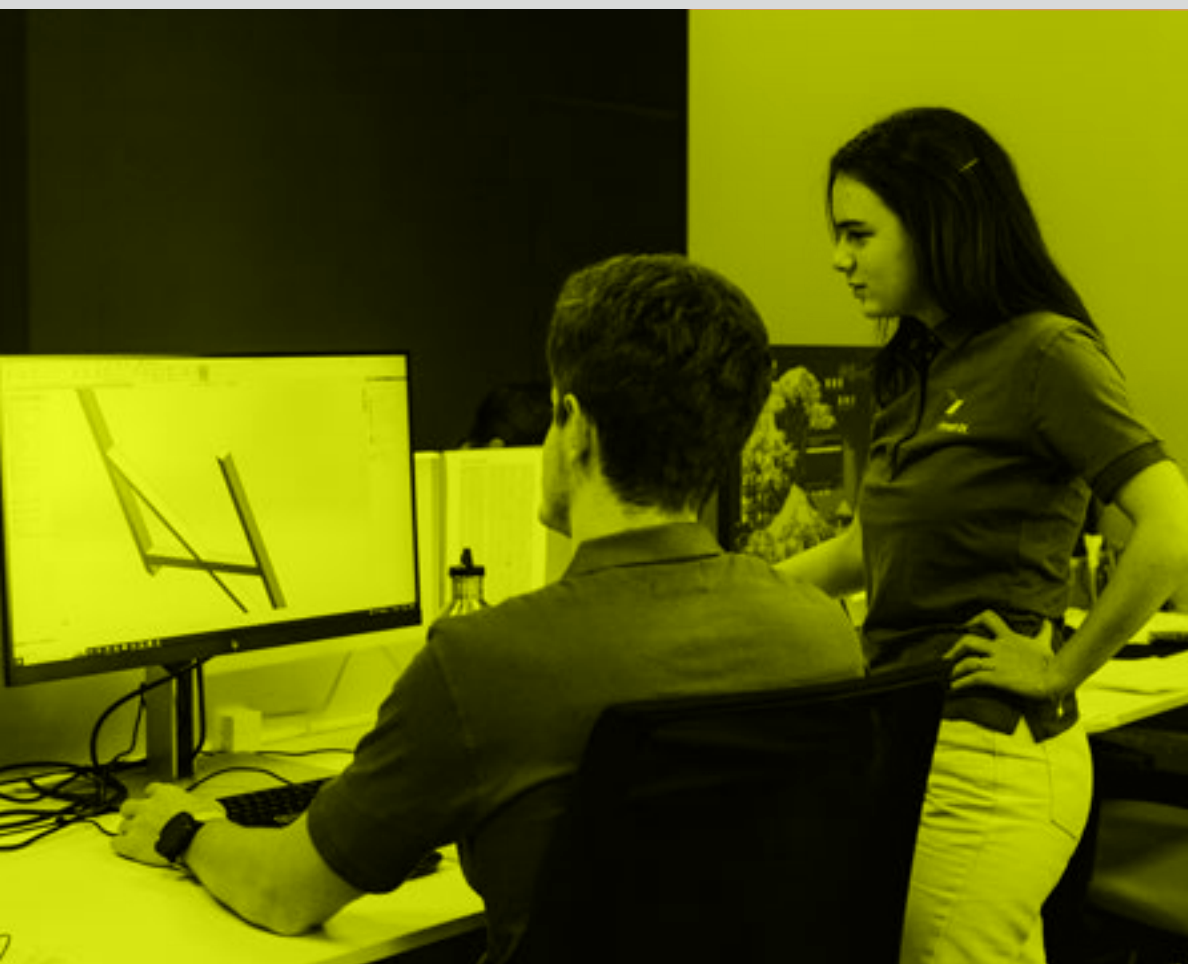
**WHAT DO WE OFFER MORE?**  
We own the expertise to select the **RIGHT PROFESSIONALS** for your company. Customer we supported in selecting new members for their staff can witness the **ADDED VALUE** we granted.





# RECRUITING OF TEMPORARY SPECIALIZED STAFF

Sometimes you **NEED TO ADD QUICKLY NEW FRESH RESOURCES** in your technical department but have no opportunity, possibility or willing to invest time and money in training. **FLEXIBILITY** is priceless nowadays. If you choose the insourcing solution, you must be able **TO TRUST WITH YOUR EYES CLOSED**.



Poweren provides to its customers a service of recruiting temporary specialized staff aiming to fulfill **NEEDS OF EXTRA STAFF**. It is important to identify the role the new resource will play, to understand which competence and technical expertise are requested in order to be able **TO CHOOSE THE BEST CANDIDATE AMONG OUR PROFESSIONALS** for that position. Second step consists in analyzing the organization chart, identifying superiors and ensuring an insertion path for the new member within new staff.



## WHAT DO WE OFFER MORE?

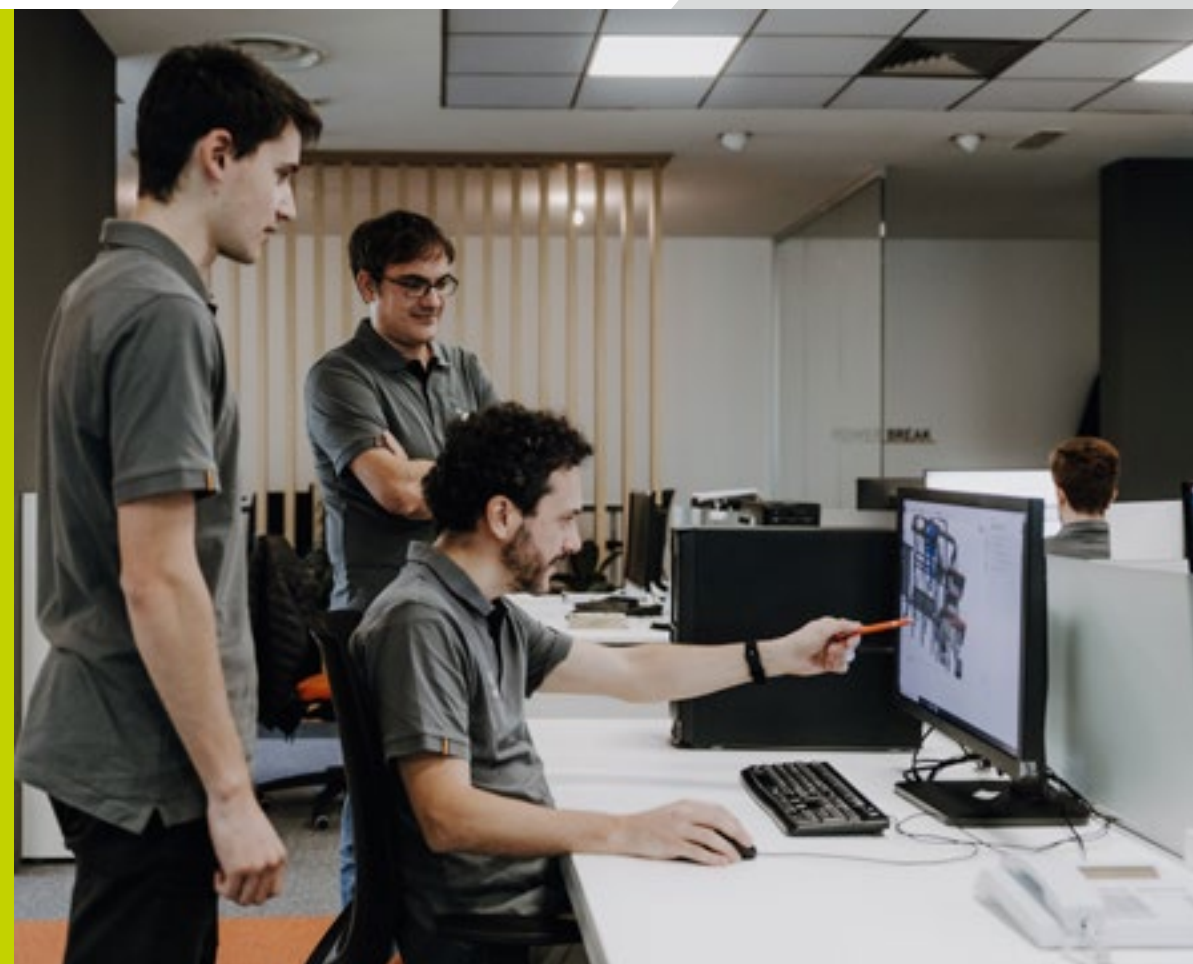
We provide different kind of solutions according to your needs ranging from **SHORT TERM RECRUITING**, selecting resources that can be **IMMEDIATELY OPERATIONAL** in case of emergency, due delivery dates etc to **LONG TERM RECRUITING**.

In this second scenario, you can plan your activity counting on extra support by personnel offering competitive **FLEXIBILITY**. In case of non-scheduled or sudden orders, you may rely on a resource that will be promptly at your disposal, a sort of “first aid” to lean on when necessary.



# RECRUITING AND TRAINING OF SPECIALIZED STAFF

A company is made up of people and everyone has its own role: **RECRUITING COMPETENT PERSONNEL** able to work in team is a priority. If you want to innovate your business, you must first invest on human resources. Relying on us is the right choice: we do have the expertise and competence you need.



We will realize a staff screening: our professionals will be by your technical department side to ensure its enhancement by helping it in gaining the required know-how to work autonomously.  
We will deal with **ARRANGING LEARNING PATHS**.  
We will develop together an organizational chart and we will bring you the required **TOOLS TO IMPROVE THE QUALITY OF WORK**, performances and staff satisfaction.  
We will select for you the **BEST CANDIDATES TO ENRICH YOUR STAFF**.

## WHAT DO WE OFFER MORE?

- We will follow you step-by-step to trace **THE PATH OF COMPANY RESTRUCTURING**, we will accompany you on every step of the way.
- Our a **LONG-STANDING EXPERIENCE** in recruiting will be at your disposal.
- We will be there to support you during peak of loads providing **OUTSOURCING PROFESSIONALS**.

## CONTACTS

**Poweren®**

**Power Engineering s.r.l.**

Via delle Industrie 1,  
Ponzano Veneto, 31050, TV

t. +39 0422 881263

[www.poweren.it](http://www.poweren.it)

[www.poweren.it/en/](http://www.poweren.it/en/)

